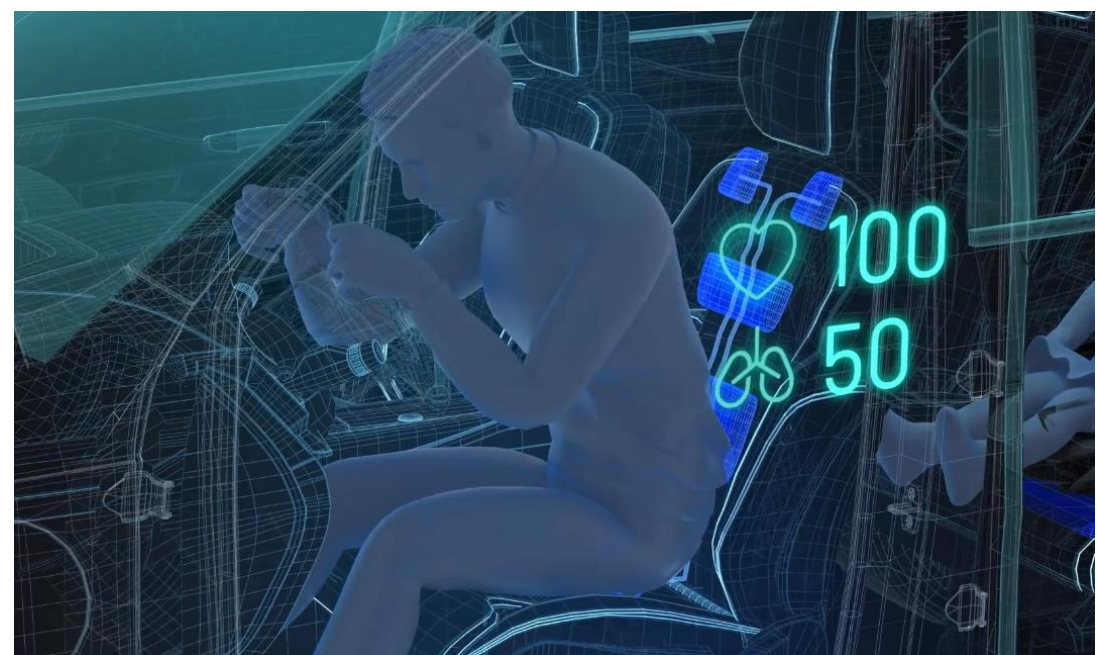
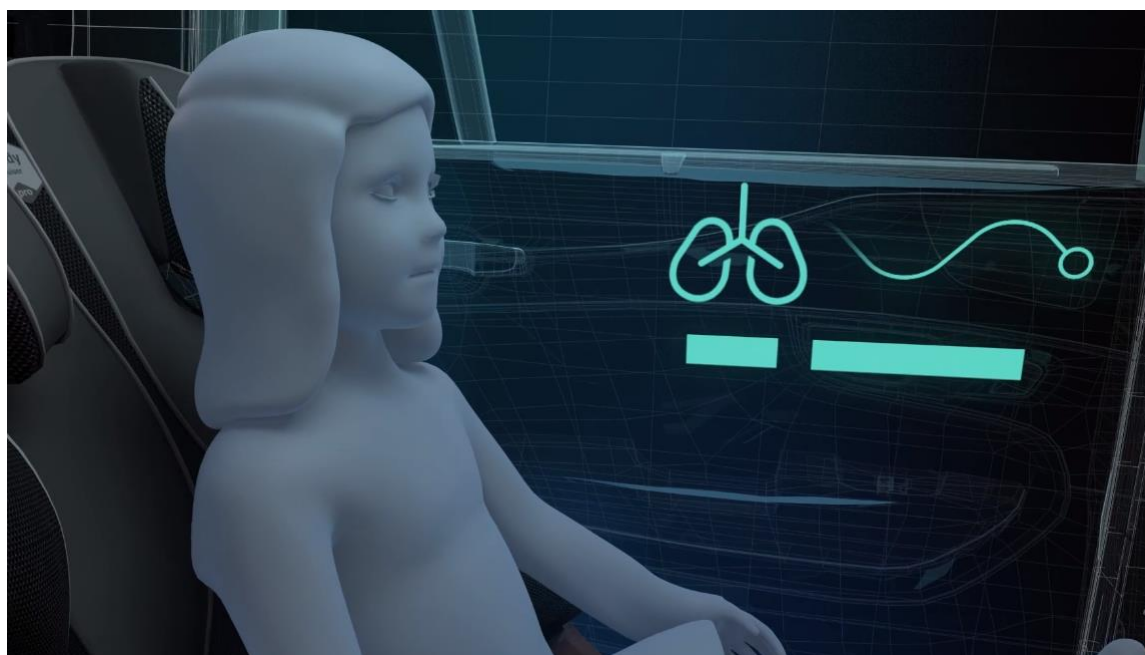


Child presence detection system



A system that can be used for various purposes, not only to **detect child left behind**, but also to prevent accidents by **detecting physical abnormalities** in drivers such as signs of falling asleep and fatigue.

Realized by non-contact impedance detection technology



Thin sheet-shaped electrode is embedded in the seat, and non-contact sensing technology can measure people's heart rate and respiration.

Designed to:

Prevent child left behind in a car
Monitor health conditions